

DR. MILES POOR'S PROTOCOL FOR REDUCTION OF ALVEOLITIS ASSOCIATED WITH EXTRACTION SITES:²

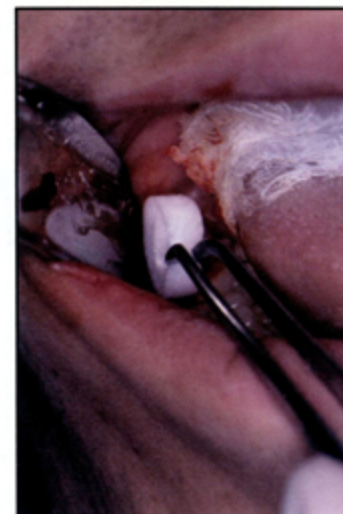
- Analysis of mandibular third molar sites showed that 8.0% (78 of 975 sites) in the Gelfoam[®] group developed AO, whereas only 1.1% (11 of 958 sites) in the SaliCept[™] group developed AO.
- Further analysis of all extraction sites showed that incidence of AO in the Gelfoam[®] group was 7.6% compared with 1.1% in the SaliCept[™] group.
- Based on supplies used in this study, a significant savings (>\$6 per patient) was realized using the SaliCept[™] Patch.



Minimal Flap
Elevation to
Expose Impactions



Tooth Socket, Suctioned
Free of Clots Following
Tooth Removal



Placement of 1st of 2
SaliCept[™] Oral Patches

SaliCept[™] Oral Patch

Product Description:

The SaliCept[™] Oral Patch is a freeze-dried gel that contains Acemannan Hydrogel[™], a product obtained from the inner gel of *Aloe vera* L. Other ingredients include hydroxethyl cellulose, polyvinylpyrrolidone, benzethonium chloride and simethicone. It is pliable, white to off-white, with a texture similar to that of finely woven cotton.

Protocol for Use:

Post-extraction:

Immediately after extracting the tooth, aspirate any clot that has formed and ensure that the socket is free of all debris. Use cotton pliers to place two SaliCept[™] Oral Patches in the socket, one on top of the other. Only one SaliCept[™] Oral Patch may be necessary in sockets other than those of molar teeth. Reposition the flap and have the patient bite down on cotton gauze as usual. Sutures need not necessarily be placed, as the flap will tend to adhere to the SaliCept[™] Oral Patch. However, placement of sutures is not contraindicated with use of the SaliCept[™] Oral Patch; sutures may be placed if the surgeon deems them necessary for hemostasis. No further manipulation of the SaliCept[™] Oral Patch is necessary. The SaliCept[™] Oral Patch will gradually rehydrate to the gel phase and continue to coat and protect the tissues.

For management of alveolar osteitis:

Gently rinse the socket and place one or two patches of the SaliCept[™] Oral Patch into the socket. The SaliCept[™] Oral Patch may be used alone or it may be saturated with an obtundent such as eugenol. This procedure may be repeated daily or as needed until sufficient healing has taken place and discomfort has resolved.

* Gelfoam[®] is a registered trademark of Pharmacia and Upjohn Company, a subsidiary of Pharmacia Corporation, Kalamazoo, MI 49001, USA.